



SEMIAUTOMATIC SPORTING RIFLE
M2010

cal. .223 Rem. / .222 Rem. / .308 Win. / .243 Win.



ATTENTION:
PLS READ
DESCRIPTION
AND HANDLING
BEFORE USE

DESCRIPTION AND HANDLING

SAFETY MEASURES

We want you to enjoy safe shooting with the rifle you purchased. You may be an experienced shooter, already familiar with the procedures in this Instruction manual, but we urge you to read this entire Instruction manual carefully. You must follow the safety instructions for your safety and the safety of others.

WARNING: ALWAYS CARRY YOUR SEMIAUTOMATIC SPORTING RIFLE (hereinafter RIFLE) EMPTY IN ORDER TO AVOID RISK OF ACCIDENTAL DISCHARGE.

1. ALWAYS HANDLE YOUR RIFLE AS IF IT WERE LOADED so that you never fire it accidentally when you think it is unloaded.
2. NEVER POINT YOUR RIFLE AT ANYTHING YOU DO NOT INTEND TO SHOOT so that if it fires accidentally, injury, death or damage to property will be prevented.
3. NEVER TAKE ANYONE'S WORD THAT A RIFLE IS UNLOADED, check it for yourself with fingers off the trigger and gun pointed in a safe direction.
4. ALWAYS KEEP AND CARRY YOUR RIFLE EMPTY, WITH THE FIRING PIN UNTENSIONED EXCEPT WHEN YOU INTEND TO SHOOT, SO THAT THE GUN CANNOT BE FIRED WHEN YOU DO NOT MEAN IT.
5. NEVER DRINK ALCOHOLIC BEVERAGES OR TAKE DRUGS BEFORE OR DURING SHOOTING, as your vision and judgment could be seriously impaired making your gun handling unsafe.
6. ALWAYS SEEK DOCTOR'S ADVICE IF YOU ARE TAKING ANY MEDICATION, to be sure you are fit to shoot and handle your gun safely.
7. ALWAYS USE ONLY CLEAN, DRY, ORIGINAL HIGH QUALITY COMMERCIALLY MANUFACTURED AMMUNITION IN GOOD CONDITION, WHICH IS APPROPRIATE TO THE CALIBER OF YOUR RIFLE.
8. ALWAYS BE SURE THAT BARREL INTERIOR IS CLEAN AND THAT THE BORE AND THE MUZZLE ARE CLEAR OF OBSTRUCTIONS. Clean a fouled rifle immediately, so that it will function correctly and safely.
9. ALWAYS WEAR AND ENCOURAGE OTHERS TO WEAR EAR PROTECTION WHEN SHOOTING, especially on a range. Without ear protection the noise from your rifle and other guns close to you, could leave ringing in the ears for some time after firing, while the cumulative long term effect could be permanent hearing loss.
10. ALWAYS WEAR AND ENCOURAGE OTHERS TO WEAR PROTECTIVE-SHOOTING GLASSES, especially on a shooting range.
11. OBEY THE COMMANDS OF THE PERSON IN CHARGE OF THE RANGE, SO THAT DISCIPLINE IS MAINTAINED TO REDUCE THE LIKELIHOOD OF ACCIDENTS.
12. ALWAYS BE SURE YOUR BACKSTOP IS ADEQUATE TO STOP AND CONTAIN BULLETS BEFORE BEGINNING TARGET PRACTICE, SO THAT YOU DO NOT HIT ANYTHING OUTSIDE THE RANGE SHOOTING AREA.
13. ALWAYS BE ABSOLUTELY SURE OF YOUR TARGET AND THE AREA BEHIND IT BEFORE YOU SQUEEZE THE TRIGGER. A bullet could travel through or past your target. It has enough energy to cause unwanted consequences at large distances. If in doubt, do not shoot.

14. NEVER SHOOT AT A HARD SURFACE OR AT WATER. A bullet may ricochet and travel in any direction to strike you, or an object you cannot see, causing injury, death or damage to property.
15. NEVER FIRE YOUR RIFLE NEAR AN ANIMAL UNLESS IT IS TRAINED TO ACCEPT THE NOISE; an animal's startled reaction could injure it or cause an accident.
16. NEVER USE YOUR RIFLE IF IT FAILS TO FUNCTION PROPERLY, AND NEVER FORCE A JAMMED ACTION, AS A ROUND MAY EXPLODE CAUSING SEVERE DAMAGE TO YOUR RIFLE, SERIOUS INJURY OR POSSIBLE DEATH.
17. ALWAYS HOLD THE RIFLE BY THE STOCK, IN DEFINED (CARVED) ZONES, SINCE YOU COULD BE HURT BY HOT METAL OR MOVING PARTS.
18. NEVER SQUEEZE THE TRIGGER OR PUT YOUR FINGER IN THE TRIGGER GUARD UNTIL YOU ARE AIMING AT A TARGET AND READY TO SHOOT.
19. IN CASE OF MISFIRE: Holding the rifle pointed toward the target. Wait 30 seconds. If a hang fire (slow ignition) has occurred, round will fire within 30 seconds. If round does not fire, eject round, and examine primer. If firing pin indent on primer is light, off centre, or non-existent, have the rifle examined by a competent gunsmith. If firing pin indent on primer appears normal (in comparison with similar previously fired rounds) assume faulty ammunition. Segregate misfired round from other live ammunition and empty cases, reload and carry on firing.
20. NEVER LEAVE YOUR RIFLE READY TO FIRE, SINCE THIS POSITION IS EXTREMELY DANGEROUS BECAUSE OF RISK OF ACCIDENTAL DISCHARGE CAUSING SERIOUS INJURY, DEATH OR DAMAGE TO PROPERTY.
21. KEEP THE RIFLE POINTING TOWARDS THE BACKSTOP WHEN LOADING, FIRING AND UNLOADING, TO ELIMINATE THE RISK OF INJURY, DEATH OR DAMAGE TO PROPERTY.
22. NEVER LEAVE A LOADED RIFLE UNATTENDED. There is always a chance that someone will use it and cause injury, death or damage to property.
23. NEVER INDULGE IN "HORSEPLAY" WHILE HOLDING YOUR RIFLE AS IT MAY BE ACCIDENTALLY DISCHARGED.
24. ALWAYS INSTRUCT CHILDREN TO RESPECT FIREARMS. Keep your rifle out of reach of children. The training of all, including children (age determined by law), should be performed by authorized people in institutions equipped and authorized for that kind of activity.
25. WHEN YOUR RIFLE IS READY TO FIRE, OTHER PEOPLE MUST NOT BE IN FRONT OR NEAR YOU. Always hold your rifle so that you can control the direction of the muzzle.
26. ALWAYS MAKE SURE YOUR RIFLE IS NOT LOADED BEFORE CLEANING, STORING OR TRAVELLING, MAGAZINE REMOVED FROM THE PISTOL, BEFORE YOU STORE IT OR TRANSFER IT TO SOMEBODY ELSE, SO THAT IT CANNOT FIRE ACCIDENTALLY.
27. ALWAYS KEEP AND STORE YOUR RIFLE AND AMMUNITION IN SEPARATE LOCKED RECEPTACLES, OUT OF REACH AND SIGHT OF CHILDREN AND UNTRAINED PEOPLE.

TECHNICAL CHARACTERISTICS

Semiautomatic sporting rifle M2010 is a gas operated weapon, with rotating bolt. Its reliability, accuracy, and precision were confirmed in practice and they guarantee that these sporting rifles will be up-to-date in the following period, as well.

Barrel of semiautomatic sporting rifle is

made by forging, from high quality vanadium steel. Interior dimensions of the barrel are in accordance with International standards. Resistance of the barrel and the complete sporting rifle is also checked in accordance with International standards, which is proven by the stamps on the rifles.

Surface protection and finish of the sporting rifle are of high quality. Finish is blue. Plastic parts are made of high quality polymer impregnated with high-resistance fibres.



Fig. 1 Semiautomatic rifle M2010 (left side view)

Table 1: Technical characteristics

Model	M2010	
Caliber (mm)	.223 Rem / .222 Rem.	.308 Win. / .243 Rem.
Magazine capacity (rounds)	10 or 20	10 or 20
Barrel length (mm)	542	535
Overall length (mm)	1025	1025
Weapon weight (g)	4.350	4.280
Twist (mm)	305 / 360	300 / 250
Number of grooves	6	4
Operation	gas operated	gas operated
Locking	rotating bolt	rotating bolt
Muzzle velocity (m/s)	945 / 925	840 / 880
Finish	blue	blue

Table 2: Complete set

	Complete set	
1.	Weapon	1
2.	Magazine - assembly	1+1
3.	Technical instruction manual and technical booklet	1
4.	Cardboard box	1



Fig. 2 Semiautomatic rifle M2010 (right side view)

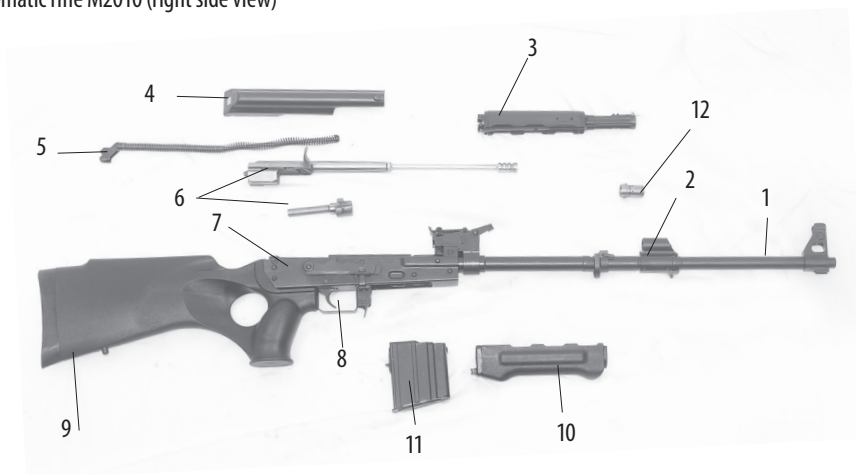


Fig. 3 Parts of semiautomatic rifle: 1-barrel, 2- gas block, 3-gas tube with upper hand guard, 4-cover, 5-recoil mechanism, 6- bolt carrier with bolt, 7-receiver, 8-trigger mechanism, 9-stock, 10-lower hand guard, 11-magazine, 12-gas flow regulator

HANDLING

Before using SEMI-AUTOMATIC SPORTING RIFLE (hereinafter: rifle) for the first time

Before a new rifle is used, it is necessary to remove preserving material.

To remove the preserving material, wipe all parts after the rifle is disassembled (instructions for disassembly follow). Special attention should be paid to the cartridge chamber and barrel interior. After the rifle is assembled, the bolt handle should be pulled to the rear and then released to return to initial position. After this inspection, the rifle is ready for use.

After each following use, the rifle should be wiped, especially the barrel, which must be dry, because otherwise there is a risk that large quantity of soot will accumulate on the walls of the barrel and the barrel could be damaged.

Check whether the ammunition is clean and undamaged.

LOADING

To load an empty magazine, press the cartridge towards the rear side of the magazine and press the cartridge to the magazine interior at the same time.

To place the magazine (Fig. 4), push it into the well on the lower side of the rifle. Front cam on the magazine should catch the outlet of the receiver in place „p“, and the magazine catch should support rear magazine cam in place „z“. Pull the bolt carrier lever fully rearwards and release it. While the bolt moves forward, it pushes the cartridge out of the magazine and brings it into the barrel.

The weapon is ready to be fired. Pull the trigger lightly to trigger the gun.

The rifle functions as a semi-automatic weapon, i.e. if the user wants to shoot again, he should release the trigger and

then pull it lightly again. This can be repeated as long as there is ammunition in the magazine.

If the user wishes to stop shooting, the magazine must be taken out and then the bolt handle should be pulled backwards, so that the cartridge could be taken out of the chamber. The weapon is blocked by switching the fire selector lever to position SAFE (Fig. 5).

When the fire selector lever is switched to position SAFE, the trigger (trigger mechanism) is blocked.

When the fire selector lever is switched to position SAFE, there are some additional positive effects:

- unwanted triggering is prevented;
- a cartridge cannot be fed to the barrel, because the fire selector lever prevents the bolt from moving to the rear position;
- part of the cover is closed, so dirt cannot come into the receiver.

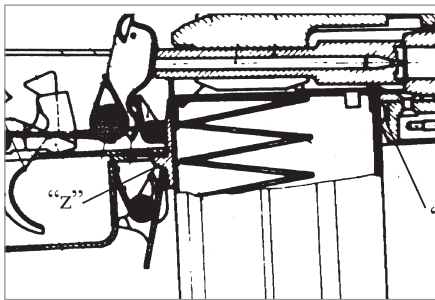


Fig. 4 Place the magazine



Fig. 5 The fire selector lever

The weapon can be blocked even when a cartridge is in the barrel. This prevents triggering. Avoid this, as it is highly unsafe to carry a loaded gun!

AIMING

Set the rear sight slide to the number that corresponds with the estimated distance to the target (1=100m) and aim, so that the upper edge of the front sight matches the upper edge of the slot on the rear sight (Fig. 6). The weapon is disassembled for the purposes of cleaning, lubrication and inspection.

Only expert personnel can disassemble the weapon further.

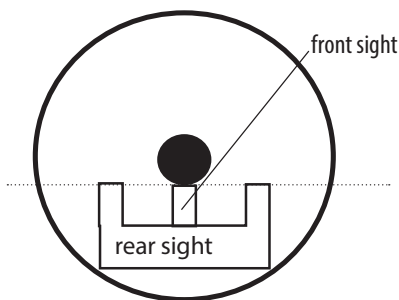


Fig. 6 Aiming

DISASSEMBLY

The rifle is disassembled in the following order:

To take out the magazine (Fig. 7) – press the magazine catch and take the magazine out. Put the safety off, then pull the bolt carrier handle and empty the cartridge chamber.

To take off/open the receiver cover (Fig. 8 and Fig. 9) – press the button on the left side of the receiver, then press the receiver cover catch. Release the button on the receiver. (Receiver cover catch should remain pushed forward). Lift released cover.

To separate the recoil mechanism (Fig. 9) – push the recoil mechanism guide, so that the recoil mechanism cam comes out of the groove on the receiver, and take it out from the bolt carrier hole.

To take out the bolt carrier with bolt (Fig. 10) – pull the bolt carrier handle fully rearwards and take the bolt with the carrier out of the receiver.

To separate the bolt body from the bolt carrier (Fig. 11) – pull the bolt rearwards and turn it to the right, so that profiled cam for guiding of the bolt comes out of the profiled groove on the carrier.

To separate the gas cylinder (Fig. 12 and Fig.13) – place the slot on the bolt carrier to the bent part of the catch flap. Using the

bolt carrier, turn the flap into vertical position - this will release the gas cylinder - and separate it by lifting it upwards.

To separate the gas regulator (Fig. 14) - rotate the gas regulator and take it out of the gas block.



Fig. 7 Taking out of the magazine



Fig. 8 Pressing of the button on the receiver and cover catch

To separate the lower handguard (Fig. 15 and Fig. 16) – turn the barrel band retainer catch by 180°, push the barrel band retainer forward. Take the rear part of the handguard from its bed and separate the handguard from the barrel.



Fig. 8 Taking off/opening of the receiver cover



Fig. 9 Separation of the recoil mechanism

ASSEMBLY

The rifle is assembled in the opposite sequence of actions.

Assemble the handguard by pushing the rear part of the handguard into its bearing. Pull the lower handguard retainer

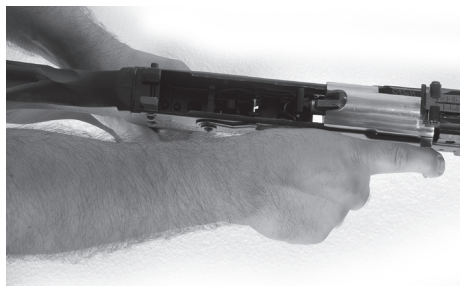


Fig. 10 Taking of the bolt carrier with piston



Fig. 11 Separation of bolt body from bolt carrier

backwards and turn the retainer catch by 180° backwards. To assemble the gas regulator - put it in the gas block and rotate it.



Fig. 12 Releasing of gas cylinder



Fig. 13 Separation of gas cylinder

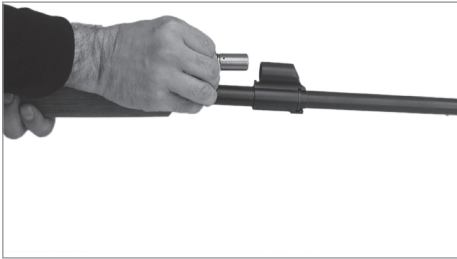


Fig. 14 Separation of the gas regulator

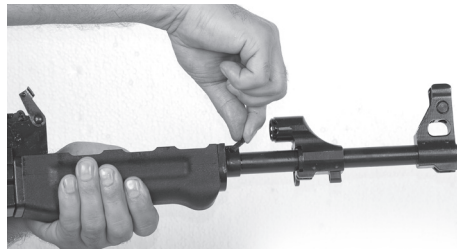


Fig. 15 Releasing of lower handguard

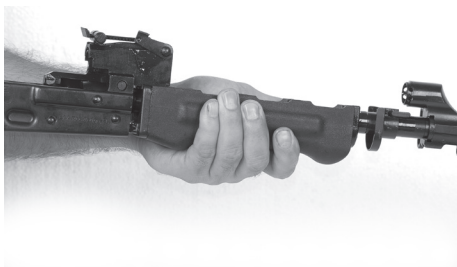


Fig. 16 Separation of lower handguard

Assemble the gas cylinder and fix it by rotating the flap (using the bolt carrier). Assemble the bolt to the bolt carrier and push the assembly into the receiver, taking care to match the grooves properly. If the rifle was unintentionally triggered during disassembly, push the hammer into the receiver before assembly (Fig. 17).

Press the recoil mechanism and place the cams on the mechanism into the grooves on the receiver. Assemble the cover. Press the button on the left side of the receiver; recoil mechanism will move backwards and the cover catch will fix the cover (Fig. 18).



Fig. 17 Pressing the hammer



Fig. 18 Fixing the cover

CLEANING

The rifle should be maintained and cleaned so that it would last long and function well. Foul and corroded barrel, barrel with soot from powder gas on it, oxidized and damaged parts of rifle mechanisms, apart from creating improper function and shorten the service life of a gun, but can cause consequences that are dangerous to the life of a shooter and the environment.

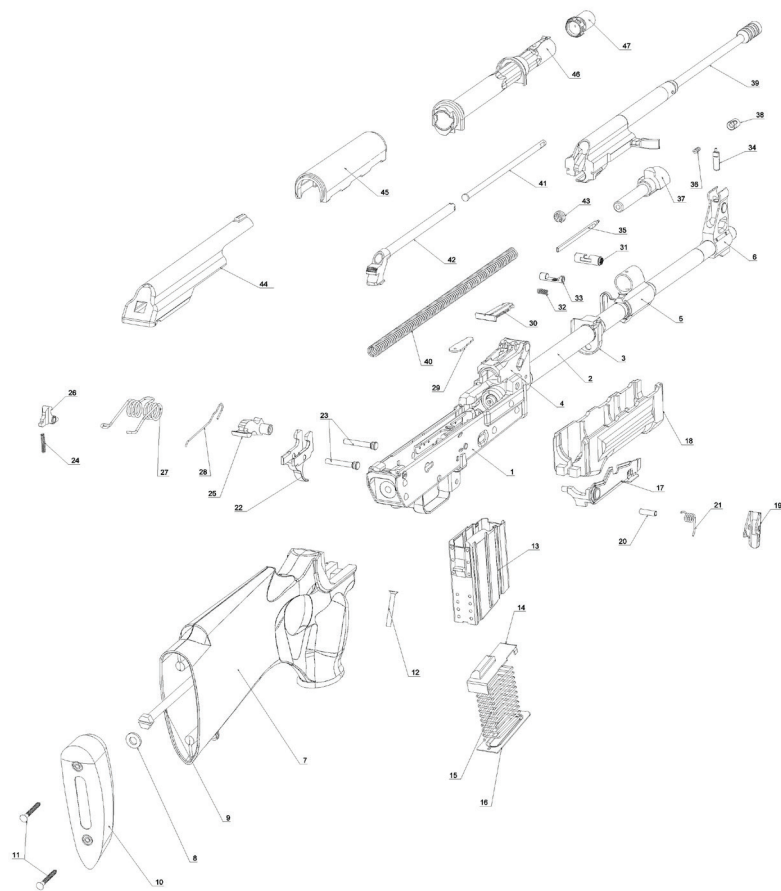
After each shooting, no matter if fired or not, a sporting rifle should be dried and wiped. Clean soot in barrel with cleaner and a cloth, changing the cloth several times. Clean cloth is a sign that the barrel is cleaned well. Insert the barrel with a cloth in the barrel through the cartridge chamber. Using the cleaner and a cloth, oil the barrel with special purpose oils.

Brushes with spiral wire should not be used for cleaning of the barrel of rifles, because they could damage smooth surfaces of the barrel.

Cleaned and lubricated gun should be kept in a dry room, away from the heat sources. It is recommended to keep it in specialized gun closets, which have safety key.

PARTS

1. Receiver
2. Barrel
3. Lower handguard retainer
4. Rear sight base
5. Gas block
6. Front sight base
7. Stock
8. Washer
9. Stock screw
10. Buttpad
11. Buttpad screw
12. Pistol grip screw
13. Magazine body
14. Follower
15. Magazine spring
16. Magazine bottom plate
17. Fire selector lever
18. Lower handguard
19. Magazine catch
20. Magazine catch pin
21. Magazine catch spring
22. Trigger
23. Hammer and trigger pin
24. Disconnect spring
25. Hammer
26. Disconnect
27. Hammer spring
28. Retainer spring
29. Rear sight leaf spring
30. Rear sight leaf
31. Rear sight slide
32. Rear sight slide spring
33. Rear sight slide catch
34. Front sight
35. Firing pin
36. Extractor spring
37. Bolt body
38. Extractor
39. Bolt carrier
40. Recoil spring
41. Recoil spring cam
42. Recoil spring guide, front
43. Securing plate, recoil spring
44. Cover
45. Upper handguard
46. Gas cylinder tube
47. Gas regulator





Zastava
a r m s

ZASTAVA ORUŽJE AD

34000 KRAGUJEVAC,

Kosovska 4

Serbia

Phone: ++381 34 301 137

Fax: ++381 34 335 349

e-mail: office@zastava-arms.com

web: www.zastava-arms.rs